

# HYDRAULIC CANAL AND DAM SAFETY DESIGN PROJECT

## Goal of the Project

Identify design alternatives for the hydraulic canal system which includes Swift Run Lake, Echo Lake and Franz Pond, which satisfy safety requirements of ODNR and retains the quality of life the waterways bring for the community.

## Why This Project? Why Now?

State law, as enforced by the Ohio Department of Natural Resources (ODNR), requires that dams be designed to fully accommodate highly extreme weather events where dam failure could result in the loss of human life. This requirement applies to all dams, new or old, and Piqua's hydraulic dam system was not originally designed to meet rigorous requirements for safety. ODNR has notified the City of Piqua that progress must be made on design modifications or enforcement action will be taken. Design changes would affect Swift Run Lake, Echo Lake and Franz Pond, and the City recognizes that these water bodies and the canal that connects them are important to the public for many reasons, and is working through this project engagement process to identify a suitable outcome that fulfills safety goals, retains the quality of life of our residents, and is cost effective.

## How Is The Community Involved In The Process?

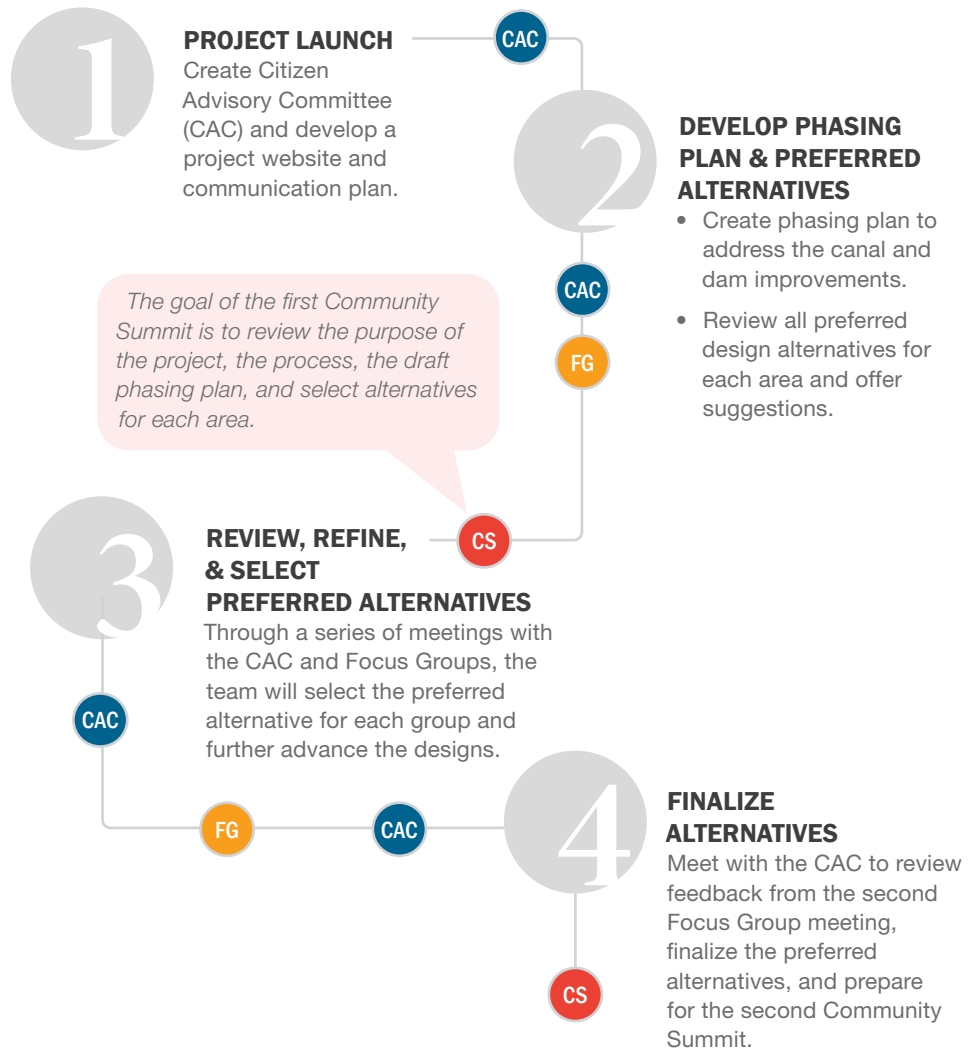
**CAC** **Citizen Advisory Committee**  
Includes representation from the Planning Commission, Utility Board, and other representatives appointed by the City Commission. This committee will guide and inform the development of the engagement process and preferred alternatives.

**FG** **Focus Group**  
These groups will largely be made up of residents and stakeholders directly impacted by the proposed alternatives. They will provide specific insight and feedback on each area.

**CS** **Members of the Public**  
Any member of the public will have the opportunity to participate in two Community Summits (CS).

## Project Process

Below includes a brief overview of the project process and engagement touchpoints. The process will occur over a 7-8 month period.



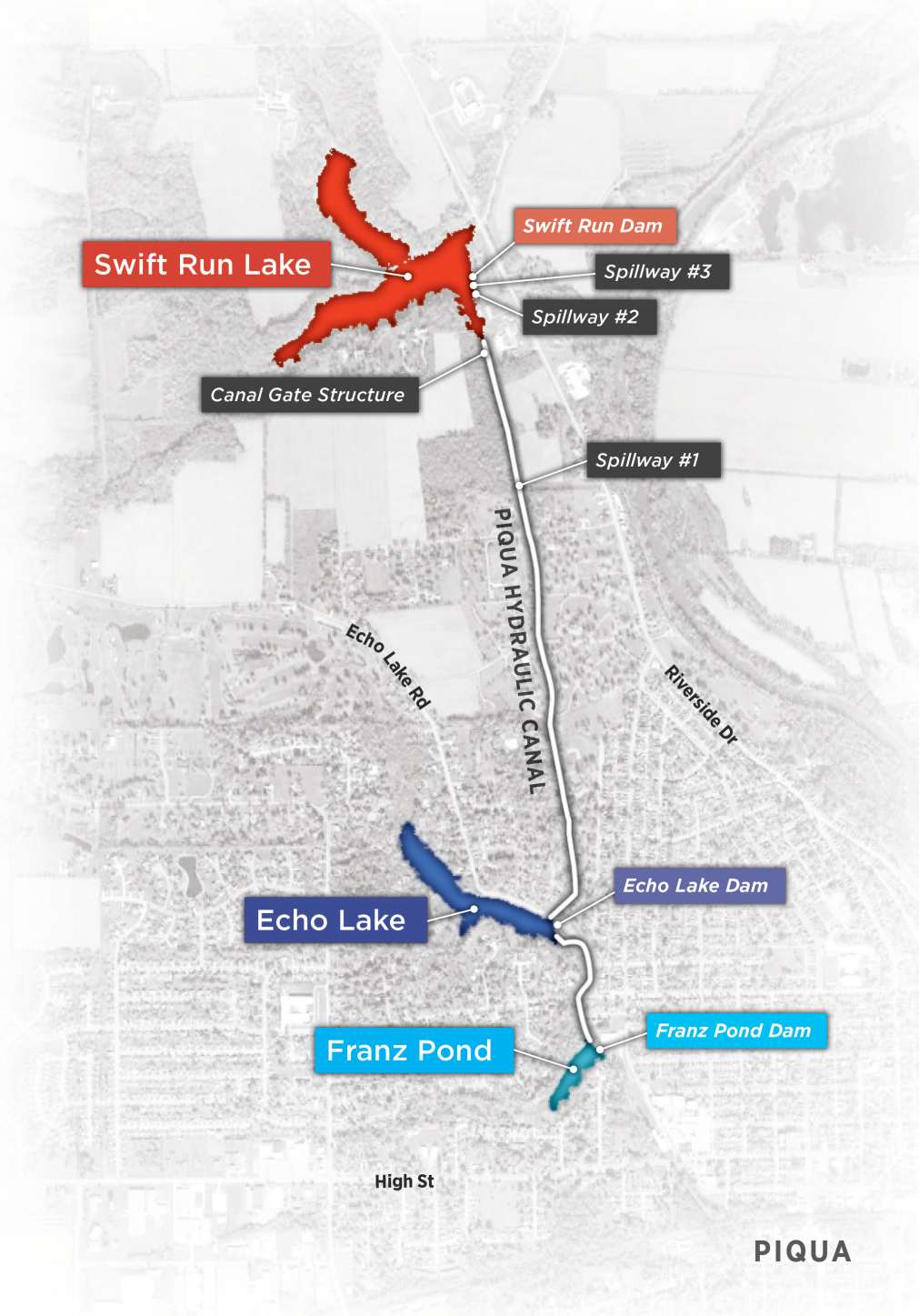
## Project Study Area

The project is focused on three areas located on the north end of Piqua:

- **Area I - Swift Run Lake**
  - » Watershed range - 7.42 square miles
- **Area II - Echo Lake**
  - » Watershed range - 1.95 square miles
- **Area III - Franz Pond**
  - » Watershed range - 1.05 square miles

### DID YOU KNOW?

- The hydraulic canal system was originally built in the 1860's and 1870's by the Piqua Hydraulic Company to provide power to downtown industries.
- The City of Piqua purchased the system in the 1870s and began using the impounded water as a drinking water supply. Currently the system provides less than 5% of Piqua's water supply.
- The canal system used to be even larger, extending down College Street and back to the Erie Canal to the east.



## For More Information

Please contact Kyrsten French at 937-778-2049, email [kfrench@piquaoh.org](mailto:kfrench@piquaoh.org), or visit the project website at [piquadamstudy2022.com](http://piquadamstudy2022.com)